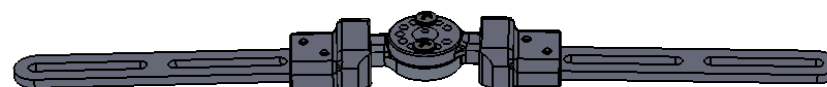
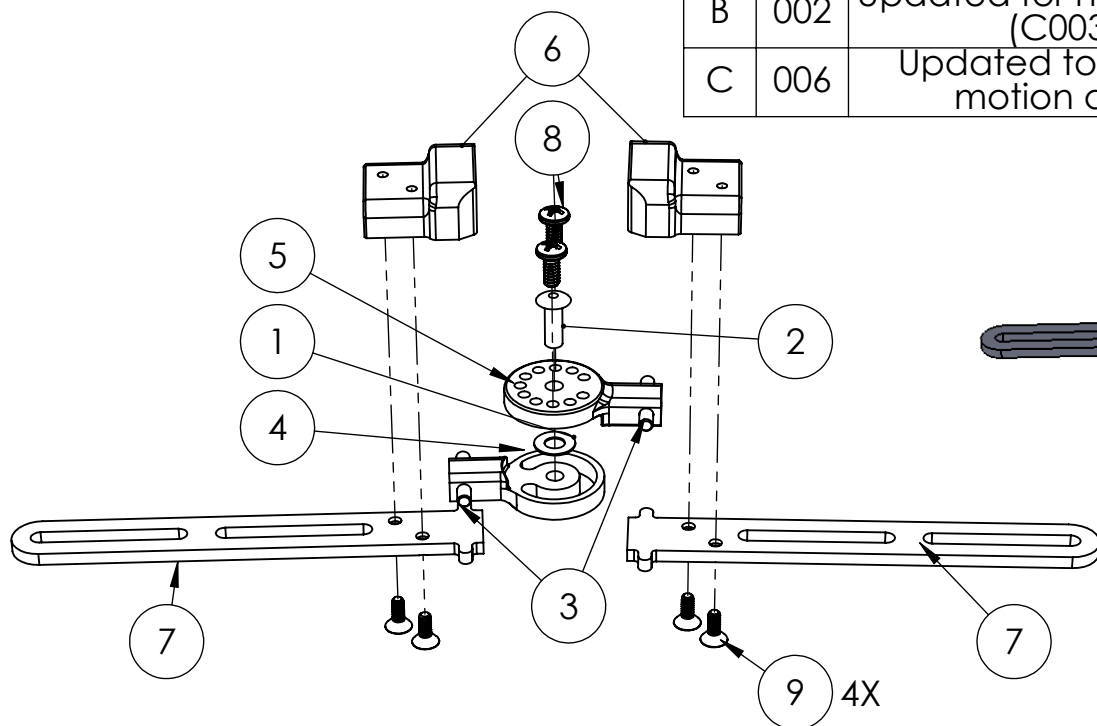


2

1

REV	CO#	DESCRIPTION	NAME	DATE
A	001	Initial Release	DW	10/20/16
B	002	Updated for new components; Large Hub (C003-01) now obsolete.	DW	11/30/16
C	006	Updated to include specific range of motion and inspection criteria.	DW	5/8/17



Apply loctite (or equivalent) to all Box Screws ((9) x4) when assembling.

ITEM NO.	PART NUMBER	DESCRIPTION	Default/QTY.	REV.
1	C003-18	Hub Washer	1	A
2	C003-17	Hub Rivet	1	B
3	C003-16	Hub to Box Dowel Pin	2	B
4	C003-06	Medium Hub - Guide	1	B
5	C003-07	Medium Hub - Holes	1	B
6	C003-06	Connector Box	2	B
7	C003-32-35	Upright - 65mm-110mm	2	B
8	C003-21	Range of Motion Screws	2	B
9	C003-09	Box Screw	4	A
-		Loctite or Equivalent		

ALL DIMENSIONS IN INCHES OR DEGREES UNLESS OTHERWISE NOTED

0.1 ± 0.1
0.01 ± 0.01
0.001 ± 0.001

PART NAME:

CAERUS Brace Hinge - Medium Assembly

REV:

C



P/N:

C003-002

DRAWN BY:

D Wenzel

DATE:

5/7/17

2:3

N/A

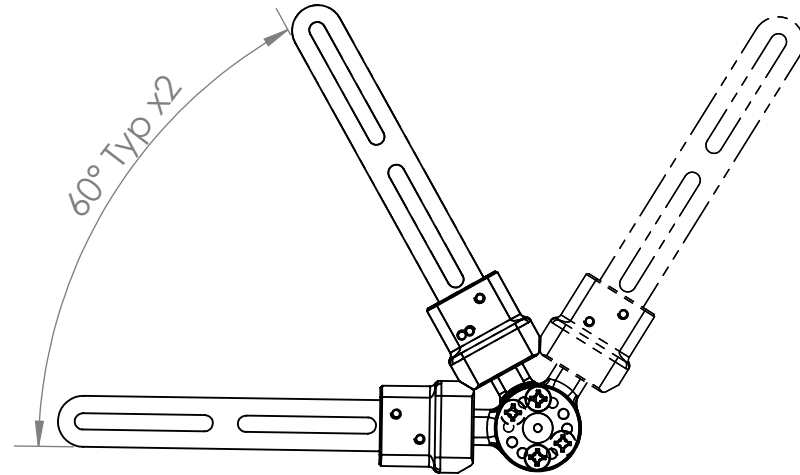
2

1

Inspection Instructions:

- Ensure the hinge assembly is able to move through the range of motion requirements listed on this page
- Ensure the hinge assembly is able to rotate smoothly about it's axis
- Ensure that there are no loose screws and loctite (or equivalent) is applied at all the correct locations as described by the assembly instructions

Hinge assembly must be able to pass through a 240 degree range ($\pm 3^\circ$) of motion in the lateral direction (shown below).



Each arm of the hinge assembly must be able to rotate through a 20 degree range ($\pm 3^\circ$) of motion about it's axis (shown below).

Hinge assembly must be able to pass through a 20 degree range ($\pm 3^\circ$) of motion in the vertical direction (shown below).

